

(DO NOT WRITE ON THIS SHEET)

CIRCUIT DIAGRAM RULES

(COPY THE FOLLOWING IN YOUR LAB BOOK)

I. Rules

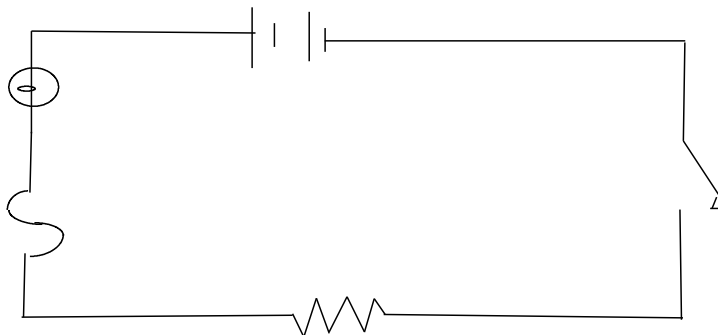
1. Always use a ruler!
2. Be neat and make your symbols clear and clean.
3. Make small box-shaped circuits with “square” corners.
4. Use proper symbols (see symbol sheet) to represent what is in the circuit.
5. Arrange the symbols evenly around the diagram.

II. Example

Problem:

Draw a circuit diagram of a circuit that contains a 2 - cell battery wired in series, an open switch, a fuse, a fixed resistor or appliance and a light bulb.

Solution:



III. Try these yourself (Draw them in your lab book - use rules above)

1. A circuit contains a 1 cell battery, a closed switch, a motor and an ammeter.
2. A circuit contains 2 cells wired in parallel, an open switch, a rheostat, a motor and a lamp.